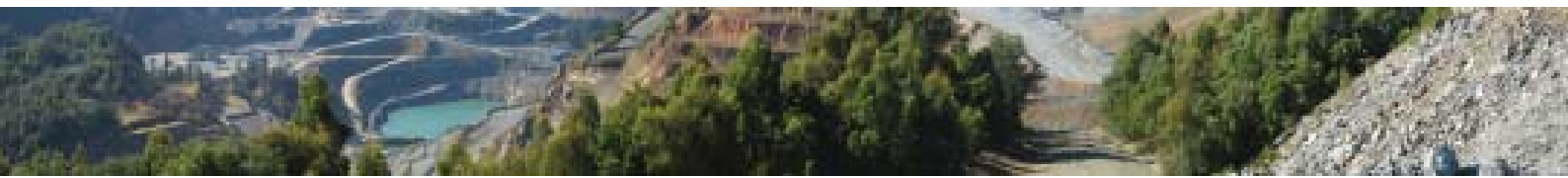


Workshop on Life of Mine Planning Technical Aspects of Operations, Closure and Relinquishment



Promoting leading practice through delivery of a quality professional development program, addressing the practical challenges of sustainable development in the minerals industry.



23-27 February 2009 Technology Park Function Centre, Bentley WA

At present the Australian mining industry is experiencing phases of expansion and contraction across a range of commodities. This increase in activity poses many significant challenges for resource companies including development of proposals for approval to mine, planning for the whole-of-mine life operation, changes to operational plans and relinquishment. It also poses challenges for government departments with responsibility for assessing projects from approval through the life of mine to mine closure. This assessment process is made more difficult by the volume of project applications, variations to mine planning and the high turnover of staff in departments that are responsible for overseeing mining activities.

Accordingly, the industry and government agencies in Western Australia have resolved to work together to streamline the planning and approvals process and highlight issues related to the operational aspects of mine planning and planning for closure and relinquishment early in the planning process. To facilitate the streamlining process, ACMER in consultation with industry and government agencies in Western Australia has developed two workshops. The first workshop on 'Life of Mine Planning from Impact Assessment to Mine Closure and Relinquishment' in November 2008, focussed on the planning and approvals process, the change process, impact assessment, and an overview of the new risk framework and identification of potential impacts and risks prior to and during mining operations, including economic and social risks.

This second workshop on 'Life of Mine Planning – Technical Aspects of Operations, Closure and Relinquishment' provides an opportunity for all parties associated with the mining industry to become aware of, and understand, the need for whole-of-life mine planning from both industry and government perspectives. It incorporates specific management practices and potential offset approaches and has been designed to allow delegates to tailor their attendance to their specific area of interest.

The program has been developed with input by colleagues from industry, WA Department of Environment and Conservation and WA Department of Industry and Resources.



KEYNOTE SPEAKERS

Emer Prof Clive Bell - formerly ACMER Director
Mr Eugene Bouwhuis - DOIR
Mr Ray Gerrard - Rally Revegetation
Dr Stuart Halse - Bennelongia Pty Ltd
Mr Evan Howard - Landloch Pty Ltd
Mr Gary Humphreys - WA Department of Water
Mr Keith Lindbeck - Keith Lindbeck & Associates
Dr Owen Nichols - EMRC Consultants
Dr Danielle Risbey - DOIR
Mr Phil Whittle - Hydrobiology Pty Ltd

BENEFITS OF ATTENDING

Share the knowledge and experience of the other participants, presenters and the facilitators on how to apply leading practice approaches to the technical aspects of whole-of-life mine planning. Understand the challenges required to minimise or avoid impacts, thereby reducing risks in mine planning and contributing to sustainable mine closure and ultimate site relinquishment.

WORKSHOP OBJECTIVES

- To reinforce the necessity for companies to commence mine planning to minimise or avoid impacts and thereby reduce risks and associated financial costs at every stage of a proposed mining operation;
- To emphasise the necessity for life-of-mine planning to commence very early in the mine cycle;
- To provide technical information to industry and government personnel on a range of topics related to mine planning, mining operations, closure and relinquishment.



Sustainable Minerals Institute

Workshop on Life of Mine Planning Technical Aspects of Operations, Closure and Relinquishment

WHO SHOULD ATTEND?



Recently appointed personnel to government departments that are involved in regulating the mining industry in WA;



Personnel who have recently commenced employment with the mining industry in WA, and industry personnel (e.g. mine planners) associated with developing new mining proposals, or proposals to expand or contract existing operations;



Experienced industry and government personnel as an update/refresher course in leading practice mine planning;



Consultants involved in assisting the mining industry in providing input to mining proposals, mine closure and relinquishment planning;



Senior personnel in government departments will also benefit through participation in dialogue with industry members.

WORKSHOP OUTCOMES

Attendees from government agencies and industry will benefit through obtaining

(1) an increased understanding of the mine planning process and the potential impacts and risks at different stages of a mining operation;

(2) an insight into the cost effectiveness of leading practice mine planning, with practical cost-savings suggestions;

(3) an increased ability to identify effective options for reducing and/or offsetting environmental impacts;

(4) the opportunity to engage in interactive case studies; and

(5) an insight into practical rehabilitation and closure planning, and essentials of ecosystem establishment, including rehabilitation of residue disposal areas with native species and creation of wetlands with a visit to Alcoa's Pinjarra Refinery site.

WORKSHOP PROGRAM

Monday 23 February 2009

Life of Mine Planning

- Outline of ICMM/MCA EV SD Principles
- Holistic land use planning and life of mine planning
- Developing operational plans and closure plans
- Cost effectiveness of good mine planning
- Regulator expectations for site relinquishment
- Characterisation of soil and waste materials

Tuesday 24 February 2009

Water Management

- Surface water management issues
- Groundwater issues
- Managing and monitoring to protect groundwater dependent ecosystems and karst systems
- Voids/Lakes/Wetland issues

Wednesday 25 February 2009

Landscape & Landform Design / Ecosystem Establishment

- Developing an overall landform/landscape design
- Practical landform construction including costs
- Tailings characteristics and disposal options
- Identification of risks and methods for their reduction
- Erodibility of material & erosion prevention/minimisation
- Selective handling of topsoil & overburden; construction of the root zone for rehabilitation in different regions
- Soil management and amelioration
- The role of covers and their construction



Thursday 26 February 2009

Ecosystem Establishment (cont'd)

- Baseline monitoring and planning and preparation
- Essentials of ecosystem establishment (in different regions, also addressing establishment issues on waste dumps and tailings)
- Site Visit to Alcoa's Pinjarra Alumina Refinery

Friday 27 February 2009

Ecosystem Management on & adjacent to Mine Sites

- Biodiversity/biodiversity offsets
- Die back issues on reconstructed landforms
- Declared rare flora, priority species and threatened ecological communities
- Assessing rehabilitation success and failures
- Habitat reconstruction/fauna monitoring & management
- Development of completion criteria for different regions

Other Topical Issues

- Dealing with existing problems/legacy issues on mine sites
- Challenges in the environmental management and closure of uranium mines

The program has been designed in a modular format to allow delegates to tailor their attendance to their specific area of interest. Every day can be booked as a separate module. However, the workshop organisers recommend that delegates should consider Wednesday to Friday (25-27 Feb) as one module. It is also an ideal introduction to ecosystem establishment and management for new industry and government personnel and as an update/refresher course for experienced personnel.



Workshop on Life of Mine Planning Technical Aspects of Operations, Closure and Relinquishment

DELEGATE DETAILS

Title:

First Name:

Surname:

Position:

Organisation:

Postal Address:

Suburb/Postcode:

State/Country:

Phone:

Fax:

Email:

Dietary Requirements:

REGISTRATION (Due 5 February 2009)

- | | |
|--|--|
| <input type="checkbox"/> 5 Day Registration - \$3295 | <input type="checkbox"/> 4 Day Registration - \$2995 |
| <input type="checkbox"/> 3 Day Registration - \$2695 | <input type="checkbox"/> 2 Day Registration - \$1950 |
| <input type="checkbox"/> 1 Day Registration - \$1050 | |

Please indicate which day(s) you will be attending:

- Mon 23 Feb - Life of Mine Planning
- Tue 24 Feb - Water Management
- Wed 25 Feb - Landscape & Landform Design/Ecosystem Establishment
- Thu 26 Feb - Ecosystem Establishment & visit to Alcoa's Pinjarra Refinery
- Fri 27 Feb - Ecosystem Management on & adjacent to Mine Sites

All prices include GST. Registration costs include morning/afternoon refreshments, lunches, workshop dinner on Tuesday, and a comprehensive set of notes. Limited places available.

PAYMENT DETAILS

Cheque - made payable to The University of Queensland

Company Purchase Order No:

Company ABN No:

Mailing address for invoice:

Bankcard MasterCard Visa

Card Number:

Name of Cardholder:

Expiry Date:

Signature:

FOR OFFICE USE ONLY



PAID DATE: _____ INVOICE NO: _____ ENTRY DATE: _____

ACCOMMODATION

Delegates can book their accommodation at their own expense at the following hotels:

Medina Grand Perth
33 Mounts Bay Road
Perth, WA 6000
Ph: + 61 8 9217 8000
Fax: + 61 8 9217 8199

Rydges Perth
Cnr Hay & King Streets
Perth 6000 WA
Ph: +61 8 9263 1800
Fax: +61 8 9263 1801

Mercure Hotel Perth
10 Irwin Street
Perth 6000 WA
Ph: +61 8 9326 7000
Fax: +61 8 92213344

For further accommodation options and information about Perth visit <http://www.westernaustralia.com/en/Destinations/Experience+Perth/Perth+City>

ACMER COMMUNICATION

Tick here if you do not wish to receive our electronic ProgramUpdates
Where did you learn about this workshop?

- | | |
|---|--|
| <input type="checkbox"/> ACMER Emailing | <input type="checkbox"/> ACMER Website |
| <input type="checkbox"/> Colleague | <input type="checkbox"/> Other (please specify): |

CANCELLATION

ACMER reserves the right to cancel any course at its discretion. Whilst we endeavour to make every effort not to do this, there could be circumstances beyond our control (e.g. insufficient numbers) that may prevent us from going ahead. In the light of this, if you need to fly, we suggest that you purchase a fully flexible airline ticket. Delegates cancellations 14-8 days before course commencement incur an administration fee of \$110. Cancellations 7 or less days before course commencement and non-attendance of the course are liable for the full registration fee. Substitutions accepted when advised.

WORKSHOP INFORMATION

Course days will commence at 8.30am and generally conclude at 5.00pm. Please note these times may be subject to slight variations. For more information please go to: www.acmer.uq.edu.au/training/program.html

VENUE

Technology Park Function Centre
2 Brodie Hall Drive
Bentley WA 6102
Phone: 08 9451 0888
Email: functioncentre@techparkwa.org.au
Web: www.techparkwa.org.au

REGISTRATION FORM - WORKSHOP ON LIFE OF MINE PLANNING, 23-27 FEBRUARY 2009, TECHNOLOGY PARK FUNCTION CENTRE, BENTLEY WA